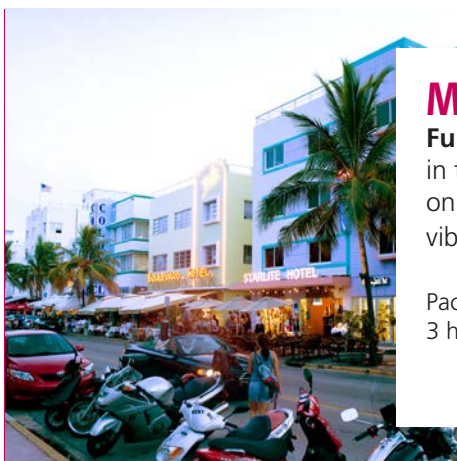


Excursions Boca Raton

2014



Miami

Full-day excursion to South Florida's unofficial capital allowing students to take in the major sights, such as Lincoln Road and the world famous South Beach, on a walking tour providing students with a unique taste of this exciting and vibrant city. (Group visits to a particular attraction on request).

Packed lunch included. The total duration of this trip is approximately 9 hours, of which 3 hours is travel time.



Miami Seaquarium

Full-day excursion to the longest operating oceanarium in the USA, Miami Seaquarium. This 38 acre marine park is home to Flipper the Dolphin and Lolita the Killer Whale. Students will round off the day with a trip to the near-by Mall of America where they can shop till they drop.

Packed lunch included. The total duration of this trip is approximately 9 hours, of which 3 hours is travel time.



NASA (3 & 4 Week Students)

Full-day excursion to the iconic home of America's space program. Kennedy Space Center offers students the opportunity of a lifetime to visit and explore the grounds from where NASA sends people into space. A 30 minute rest stop for food and refreshment will be made each way.

Breakfast, lunch & dinner included. The total duration of this trip is approximately 16 hours, of which 8 hours is travel time.



Key West (4 Week Students only)

Full-day excursion to the southern most point of the continental United States of America. Students will enjoy a visit to the home of one of Key West's most famous residents and renowned author, Ernest Hemmingway. Students will then be allowed free time to explore Duval Street, home of the weird and the wonderful.

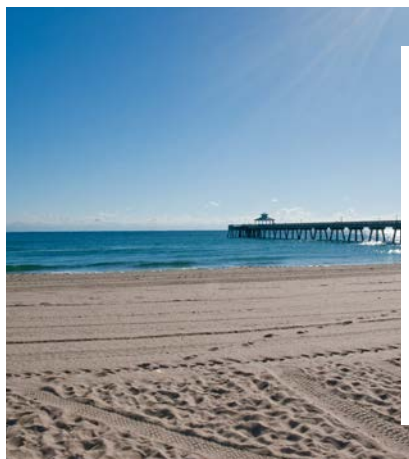
Packed breakfast, lunch and dinner included. The total duration of this trip is approximately 16 hours, of which 8 hours is travel time.



West Coast Experience (4 Week Students Only)

Full-day excursion to the West Coast of Florida for students staying for 3 or 4 weeks. Students will visit Fifth Avenue in Naples for some shopping, after which they will spend the afternoon at the Beach.

Packed lunch included. Total duration of this trip is 9 hours, of which 3 hours is travel time.



The Beach

Half-day excursion to one of South Florida's lifeguard patrolled beautiful beaches. Students can enjoy a relaxing afternoon on one of Florida's golden beaches and participate in a variety of typical beach activities, from swimming in the Atlantic Ocean and sunbathing to playing beach soccer and volleyball. No visit to South Florida is complete without visiting one of its many beaches.

The total duration of this trip is approximately 5 hours, of which 1 hour is travel time.



Fort Lauderdale Cruise

Half-day excursion cruising around the 'Venice of America', Fort Lauderdale. Students will enjoy views of downtown Fort Lauderdale and Port Everglades.

The duration of this trip is approximately 5 hours, of which 2 hours is travel time.



Everglades

Half-day excursion to the largest subtropical wilderness in America. The Everglades is home to a variety of rare and endangered species, from the tiniest grass frog to the biggest American crocodile. Students will take part in an Airboat tour of the park, a unique way to see the local wildlife followed by an alligator show.

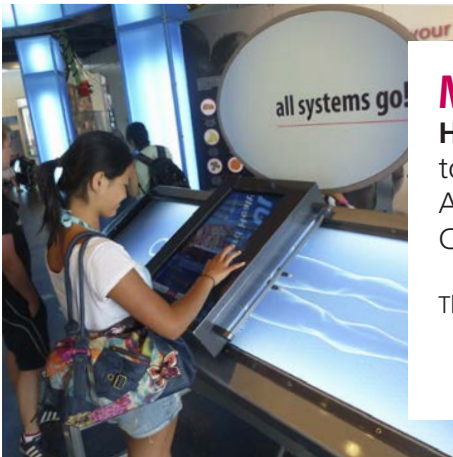
The total duration of this trip is approximately 5 hours, of which 2 hours is travel time.



Shopping

Half-day excursion to one of South Florida's many malls where students can enjoy browsing through a wide variety of America's most fashionable stores while allowing them to participate in the very American past time of, 'hanging-out' at the Mall.

The total duration of this trip is approximately 5 hours, of which 2 hours is travel time.



Museum of Discovery and Science (3 & 4 Week Students Only)

Half-day excursion to the Museum of Discovery and Science, home to over 200 interactive exhibits including sharks and the largest living Atlantic Coral reef in captivity. Followed by a trip to the local IMAX Cinema located in downtown Fort Lauderdale.

The total duration of this trip is approximately 5 hours. Travel time 2 hours.



Boomers (4 week Students Only)

Half-day excursion to Boomers one of South Florida's premier entertainment venue. Students will have a blast at Boomers, with attractions like batting cages, miniature golf, bowling, laser tag and an arcade, Boomers is the perfect place for fun!

Total duration of this trip is 5 hours, of which 1 hour is travel time.



OPTIONAL FULL-DAY EXCURSIONS



Walt Disney World Resort

Full-day excursion to one of Walt Disney World Resort parks. Students can choose from Magic Kingdom Park®, Typhoon Lagoon, Blizzard Beach, Hollywood Studios™ and Animal Kingdom Park®.

A 30 minute rest stop for food and refreshment will be made each way. Breakfast, lunch and dinner included. The total duration of this trip is approximately 16 hours, of which 8 hours is travel time.

USD 135



SeaWorld

Full-day excursion to SeaWorld, be amazed by breath taking shows featuring the most famous whale in the world, Shamu or visit the Aquatica Water Park and experience the slide of a lifetime, the Dolphin Plunge, a dolphin infested under water world.

A 30 minute rest stop for food and refreshment will be made each way. Breakfast, lunch and dinner included. The total duration of this trip is approximately 16 hours, of which 8 hours is travel time.

USD 135



Busch Gardens

Full-day excursion to this African-themed park. Busch Gardens offers students a unique combination of unrivalled thrill rides, exotic animals and stunning shows.

A 30 minute rest stop for food and refreshment will be made each way. Breakfast, lunch and dinner included. The total duration of this trip is approximately 16 hours, of which 9 hours is travel time.

USD 135



Universal Orlando Resort

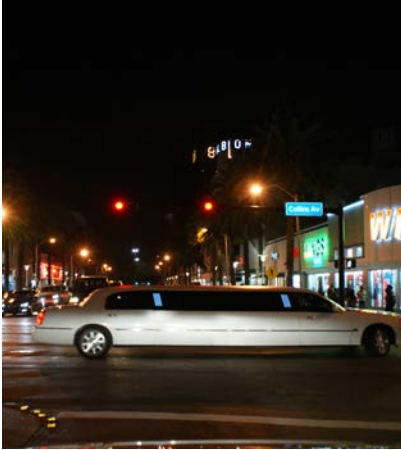
Full-day excursion to your choice of Universal Orlando Resort parks. Students can choose between Universal Studios and Universal's Islands of Adventure.

A 30 minute rest stop for food and refreshment will be made each way. Breakfast, lunch and dinner included. The total duration of this trip is approximately 16 hours, of which 8 hours is travel time.

USD 135



OPTIONAL HALF-DAY EXCURSIONS



Miami By Limo

Half-day excursion to Miami at night. Students will travel in a 20-seat stretch limousine along Ocean Drive through the world famous Art Deco district before heading to one of the most renowned destinations in the world; Miami South Beach, home of Miami's vibrant nightlife.

The total duration of this trip is approximately 5 hours, of which 2 hours is travel time.

USD 78



Florida Marlins Baseball Game

Half-day excursion to a Florida Marlins Baseball Game.

The total duration of this trip is approximately 5 hours, of which 2 hours is travel time.

USD 78

OPTIONAL WEEKEND EXCURSION



Orlando

We are offering students at LAL Boca Raton the opportunity to spend a weekend in Orlando during their stay.

Students can opt out of the included full-day Miami Seaquarium excursion and spend the weekend in Orlando instead. The weekend excursion departs LAL Boca Raton at 06.00 Saturday morning and returns at 22.00 Sunday night.

Included in the price is entrance to two of Orlando's numerous theme parks. Transport to and from Orlando is via coach and is included in the price.

Also included is one night's accommodation at Champions World Resort Hotel (or similar) in shared rooms and transfers between the hotel and theme parks.

Not included: all meals.

USD 300



Excursion Calendar

Boca Raton

2014



July

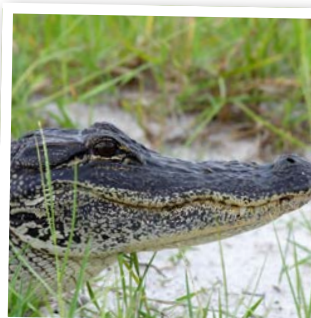
2	Wednesday	School Opens	WEEK 1
3	Thursday	The Beach	
4	Friday	Shopping at the Mall	
5	Saturday	Orlando Tampa (optional excursions)	
6	Sunday	Miami	
7	Monday		WEEK 2
8	Tuesday	Everglades	
9	Wednesday	The Beach	
10	Thursday	Miami by Limo (optional excursion)	
11	Friday	Shopping at the Mall	
12	Saturday	Orlando Tampa (optional excursions)	Orlando (optional weekend excursion)
13	Sunday	Miami Seaquarium	
14	Monday	Fort Lauderdale Cruise	
15	Tuesday		WEEK 3
16	Wednesday	West Coast Experience (3&4 week students)	
17	Thursday	The Beach	
18	Friday	Shopping at the Mall	
19	Saturday	Orlando Tampa (optional excursions)	
20	Sunday	Miami NASA Kennedy Space Centre (3&4 week students)	
21	Monday		
22	Tuesday	Everglades Museum of Discovery & Science (3&4 week students)	



Miami by Limo



Shopping at the Mall



The Everglades



NASA

- | | | |
|----|-----------|--|
| 23 | Wednesday | The Beach |
| 24 | Thursday | Miami by Limo (optional excursion) |
| 25 | Friday | Shopping at the Mall |
| 26 | Saturday | Orlando Tampa (optional excursions) |
| 27 | Sunday | Miami Seaquarium Key West (3&4 week students) |
| 28 | Monday | Fort Lauderdale Cruise Boomers (4 week students) |
| 29 | Tuesday | |
| 30 | Wednesday | West Coast Experience (3&4 week students) |
| 31 | Thursday | The Beach |

Orlando
(optional weekend excursion)

WEEK 4

August

- | | | |
|----|-----------|--|
| 1 | Friday | Shopping at the Mall |
| 2 | Saturday | Orlando Tampa (optional excursions) |
| 3 | Sunday | Miami NASA Kennedy Space Center (3&4 week students) |
| 4 | Monday | |
| 5 | Tuesday | Everglades Museum of Discovery & Science (3&4 week students) |
| 6 | Wednesday | The Beach |
| 7 | Thursday | Miami by Limo (optional excursion) |
| 8 | Friday | Shopping at the Mall |
| 9 | Saturday | Orlando Tampa (optional excursions) |
| 10 | Sunday | Miami Seaquarium Key West (3&4 week students) |
| 11 | Monday | Fort Lauderdale Cruise Boomers (4 week students) |
| 12 | Tuesday | |
| 13 | Wednesday | |

WEEK 5

WEEK 6

N.B. All the optional activities and excursions are subject to a minimum number of people so, we therefore reserve the right to cancel, prior to the student's arrival or during his/her stay. LAL is not responsible for any last minute changes to the itinerary due to unforeseen circumstances. Refunds will only be given where the excursion or activity does not take place.



Fun at the Beach



Miami South Beach



Fish



Miami Seaquarium