



# Excursions New York

# 2014



## Ellis Island & Statue of Liberty

**Full-day** excursion to two of New York's most historic sites. Students will begin their trip at Ellis Island, which from 1892 until 1954 served as New York's main immigration station. Students will then visit the neighbouring Statue of Liberty, a universally acknowledged symbol of freedom.

Packed lunch included. The total duration of this trip is approximately 9 hours, of which 2 hours is travel time. Maximum of 2-hour wait in line to enter.



## Empire State Building & The Metropolitan Museum

**Full-day** excursion to easily the most famous and recognisable member of the New York skyline. The 102-storey tall Empire State building offers students an unparalleled view of New York. Then on to New York's most popular Museum of Art home to two million individual pieces. Students will have the opportunity to experience Art through the ages, from Ancient Egypt to modern America.

Packed lunch included. The total duration of this trip is approximately 9 hours, of which 2 hours is travel time. Maximum of 2-hour wait in line to enter.



## Coney Island (3 & 4 week students only)

**Full-day** excursion to the beachside neighbourhood of Coney Island. The boardwalk that connects this amusement park filled carnival district with its quieter neighbour, Brighton Beach, is teeming with interesting things for students to see and do including Luna Park, home of the historic Coney Island Rollercoaster, the Cyclone.

Packed lunch included. The total duration of this trip is approximately 9 hours, of which 3 hours is travel time.



## Jones Beach (4 week students only)

**Full-day** excursion to one of Long Island's most interesting state parks. Jones Beach is 6 and a half miles of clean sand on the Atlantic coast. The beach is made up of 'fields' each possessing their own unique character. Whatever it is that you are looking for in a beach, Jones Beach most certainly has it.

Packed lunch included. The total duration of this trip is approximately 9 hours, of which 3 hours is travel time.



## The Jersey Shore (3 & 4 week students, on arrival days)

**Full-day** excursion to the now world famous Jersey Shore. Students will visit Seaside Heights home to one of the busiest and most action packed piers in New Jersey. Students will enjoy entrance to Breakwater Beach Water Park, home to a wide variety of exciting water slides and rides.

Packed lunch included. The total duration of this trip is approximately 9 hours, of which 3 hours is travel time.



## Times Square

**Half-day** excursion to the heart of New York's theater district and the Rockefeller Center. Times Square is one of New York's most iconic landmarks, conjuring up images of seas of crowds and taxis surrounded by a wall of skyscrapers.

The total duration of this trip is approximately 5 hours, of which 2 hours is travel time.



## SoHo

**Half-day** excursion to downtown Manhattan's place to see and be seen. SoHo stands for SOutH of HOuston Street and is the center of New York's downtown arts scene.

The total duration of this trip is approximately 5 hours, of which 2 hours is travel time.

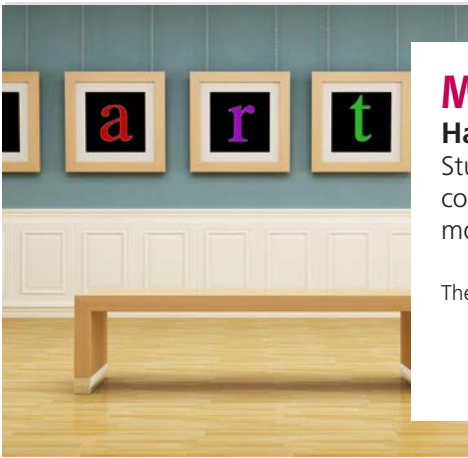




## American Museum of Natural History

**Half-day** excursion to the Museum of Natural History. Home to over 30 million artefacts and unique interactive exhibits including its world famous dinosaur halls and life-size blue whale.

The total duration of this trip is approximately 5 hours, of which 2 hours is travel time.



## Museum of Modern Art - MOMA

**Half-day** excursion to one of New York's many outstanding Museums. Students will have the opportunity to enjoy more than 100,000 pieces of contemporary art from such renowned painters as Matisse, Picasso and many more.

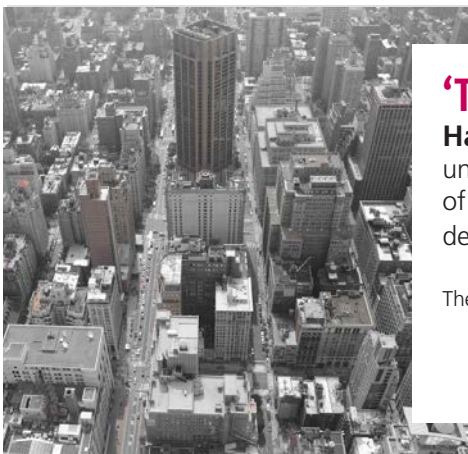
The total duration of this trip is approximately 5 hours, of which 2 hours is travel time.



## Greenwich Village

**Half-day** excursion to Greenwich Village on the lower west side of Manhattan, home to Washington Park and the house of the famous American writer, Mark Twain.

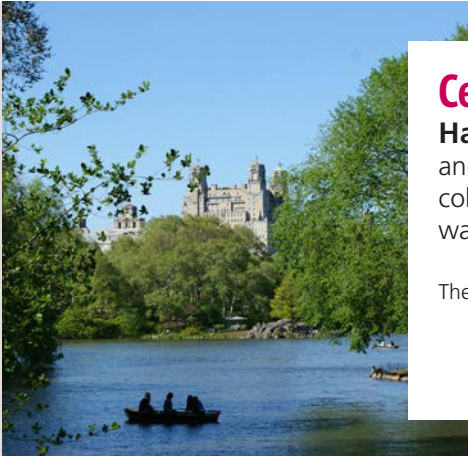
The total duration of this trip is approximately 5 hours, of which 2 hours is travel time.



## 'Top of the Rock'

**Half-day** excursion to the 70-storey tall Rockefeller Center, known for its unique combination of modernist architecture. Students will visit the 'top of the rock' a three-tiered observation deck affording an unobstructed 360 degree view of downtown Manhattan.

The total duration of this trip is approximately 5 hours, of which 2 hours is travel time.



## Central Park

**Half-day** excursion to Central Park a green oasis in the middle of the hustle and bustle of downtown Manhattan. This 843-acre park is an interesting collection of lush lawns, cool forests, flowering gardens and glassy bodies of water.

The total duration of this trip is approximately 5 hours, of which 2 hours is travel time.



## Farewell to Manhattan

**Half-day** excursion to Manhattan. Students will be asked to design their ideal Manhattan Itinerary in class as a project. Each class will vote on their favorite Itinerary which will then become their farewell trip to Manhattan. LAL will provide transportation and staffing, if entrance to a venue is requested the student will be asked to cover the cost.

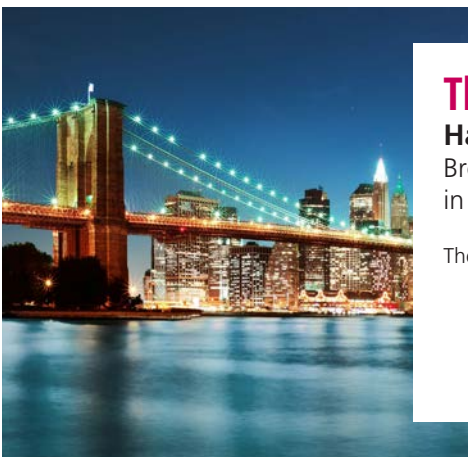
The total duration of this trip is approximately 5 hours of which, 2 hours is travel time.



## Chinatown (3 & 4 week students only)

**Half-day** excursion to New York City's Chinatown, home to the largest population of Chinese people inside the Western Hemisphere. Chinatown is located in downtown Manhattan next to little Italy. Students can see the Lieutenant Benjamin Ralph Kimlau Memorial archway, erected in memorial to the Chinese-Americans who died in World War Two in Chatham Square.

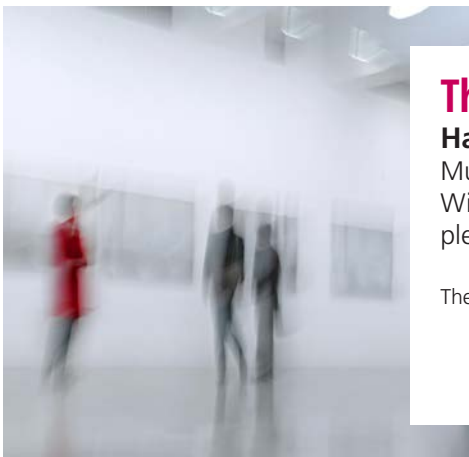
The total duration of this trip is approximately 5 hours, of which 2 hours is travel time.



## The Brooklyn Bridge (3 & 4 week students only)

**Half-day** excursion to one of the oldest suspension bridges in America. The Brooklyn Bridge was constructed in 1883 and is one of the major landmarks in New York. The bridge offers unparalleled views of the Manhattan skyline.

The total duration of this trip is approximately 5 hours, of which 2 hours is travel time.



### The Guggenheim (3 & 4 week students only)

**Half-day** excursion to the instantly recognisable Solomon R Guggenheim Museum, whose exterior is almost as fascinating as the treasures it houses. With 5000 works of art coiled round a spiral walkway, students will find plenty of interest as they wind their way around the museum.

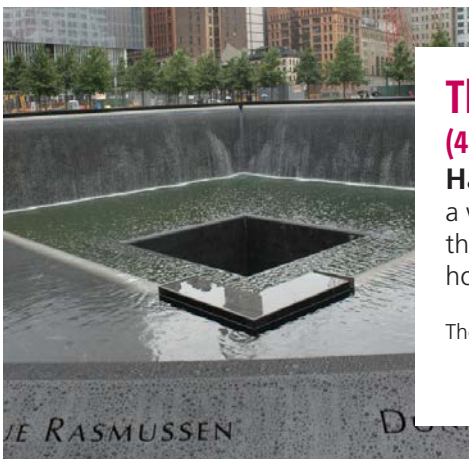
The total duration of this trip is approximately 5 hours, of which 2 hours is travel time.



### The Hudson Cruise (4 week students only)

**Half-day** excursion around the Hudson Bay. Students will enjoy a 'full Island tour' lasting approximately 2.5 hours where they can take in over 101 city sights, including Columbia University, Brooklyn Bridge and Yankee Stadium.

The total duration of this trip is approximately 5 hours, of which 2 hours is travel time.



### The Financial District & World Trade Centre Site (4 week students only)

**Half-day** excursion to the seat of American Capitalism. Students will enjoy a walking tour of Wall Street and finish with a poignant visit to ground zero, the World Trade Center Site where they can take in the twin reflecting pools, housed in the footprints of the original Twin Towers.

The total duration of this trip is approximately 5 hours, of which 2 hours is travel time.



### Chelsea Walking Tour (4 week students only)

**Half-day** excursion to Chelsea, home of the world renowned Chelsea market. Students will participate in a walking tour of this beautiful part of New York City, including High Line Park, New York's most exciting new park. Students will see the unique architecture and cutting edge art that is part of and surrounds the High Line.

The total duration of this trip is approximately 5 hours, of which 2 hours is travel time.





### The Bronx Zoo (4 week students only)

**Half-day** excursion to the country's biggest and oldest zoo. Students can explore lovingly recreated habitats from all four corners of the world, home to some 4000 animals.

The total duration of this trip is approximately 5 hours, of which 1 hour is travel time.

## OPTIONAL HALF-DAY EXCURSIONS



### New York Limo Ride

**Half-day** excursion to downtown Manhattan at night. Students will be driven by Limo to Times Square where they will enjoy some free time before being driven back to the school by Limo.

The total duration of this trip is approximately 5 hours, of which 2 hours is travel time.

USD 78



### Major League Baseball Game

**Half-day** excursion to either a New York Yankees or a New York Mets baseball game. This excursion is a unique opportunity for students to be part of the quintessential American pastime.

The total duration of this trip is approximately 5 hours, of which 1 hour is travel time.

USD 78



## OPTIONAL FULL-DAY EXCURSIONS

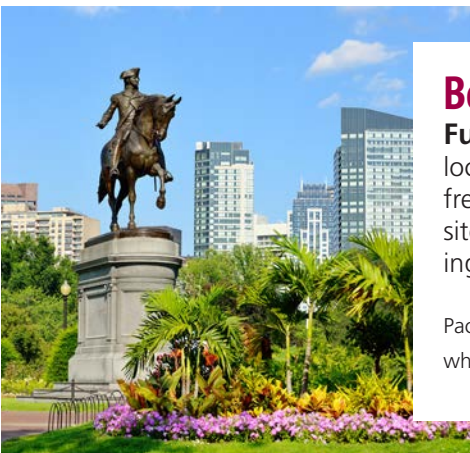


### Washington DC

**Full-day** excursion to the capital of the United States of America. Washington D. C. is located some 240 miles south of New York City and is the seat of the United States Government. Students will participate in a walking tour that will take them from the US Capitol, down the world famous National Mall to the Washington Memorial.

Packed breakfast and lunch included. The total duration of this trip is approximately 16 hours of which 8 hours is travel time.

**USD 135**



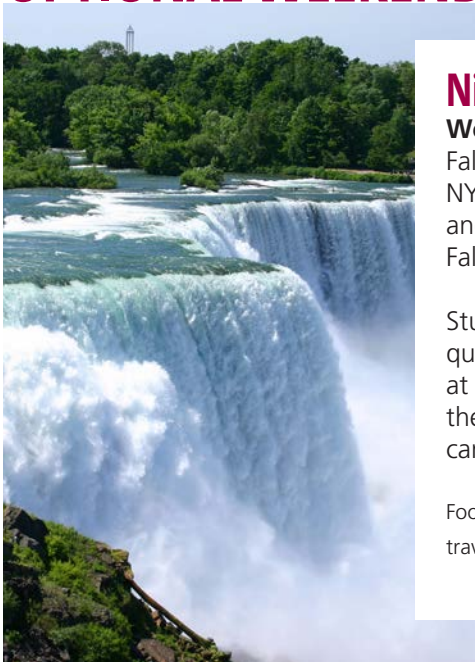
### Boston

**Full-day** excursion to one of the oldest cities in the United States. Boston is located some 210 miles north of New York. Students will participate in the freedom trail walking tour that will take them past 16 historically significant sites, including the Massachusetts State House and Paul Revere House, allowing them to discover the rich history of the American Revolution.

Packed breakfast and lunch included. The total duration of this trip is approximately 16 hours of which 8 hours is travel time.

**USD 135**

## OPTIONAL WEEKEND EXCURSION



### Niagara Falls

**Weekend** excursion to Niagara Falls, home of Horseshoe Falls, the American Falls and Bridal Veil Falls. Niagara Falls is located over 400 miles north west of NY. Students will depart LAL New York after breakfast on Saturday morning and then drive through Finger Lakes National Park before arriving in Niagara Falls.

Students will spend the night at the Comfort Inn "The Pointe" or similar in quadruple rooms. Sunday morning students will have a continental breakfast at the hotel before departing for a sight seeing cruise of Niagara Falls, Maid of the Mist. Students will depart Niagara Falls for New York City, arriving at the campus at approximately 10pm.

Food not included. The total duration of this trip is approximately 38 hours of which 16 hours is travel time.

**USD 400**



# Excursion Calendar

## New York

2014



### July

2	Wednesday	School Opens	WEEK 1
3	Thursday	Times Square	
4	Friday	SoHo	
5	Saturday	Washington DC (optional excursion)	
6	Sunday	Ellis Island & Statue of Liberty	
7	Monday		WEEK 2
8	Tuesday	American Museum of Natural History   Major League Baseball Game (optional excursion)	
9	Wednesday	Museum of Modern Art	
10	Thursday	Greenwich Village   New York Limo Ride (optional excursion)	
11	Friday	'Top of the Rock'	
12	Saturday	Boston (optional excursion)	WEEK 3
13	Sunday	Empire State Building & The Metropolitan Museum	
14	Monday	Central Park	
15	Tuesday	Farewell Manhattan	
16	Wednesday	Jersey Shore (3&4 week students)	WEEK 4
17	Thursday	Times Square   China Town (3&4 week students)	
18	Friday	SoHo   Brooklyn Bridge (3&4 week students)	
19	Saturday	Washington DC (optional excursion)	
20	Sunday	Ellis Island & Statue of Liberty   Coney Island (3&4 week students)	
21	Monday		WEEK 5
22	Tuesday	American Museum of Natural History   Guggenheim (3&4 week students)   Major League Baseball Game (optional)	
23	Wednesday	Museum of Modern Art   The Bronx Zoo (4 week students)	
24	Thursday	Greenwich Village   Financial District (4 week students)	
25	Friday	'Top of the Rock'   Hudson Cruise (4 week students)	
26	Saturday	Boston	WEEK 6
27	Sunday	Empire State Building & The Metropolitan Museum	
28	Monday	Central Park   Chelsea Walking Tour (4 week students)	
29	Tuesday	Farewell to Manhattan	
30	Wednesday	School Closes	